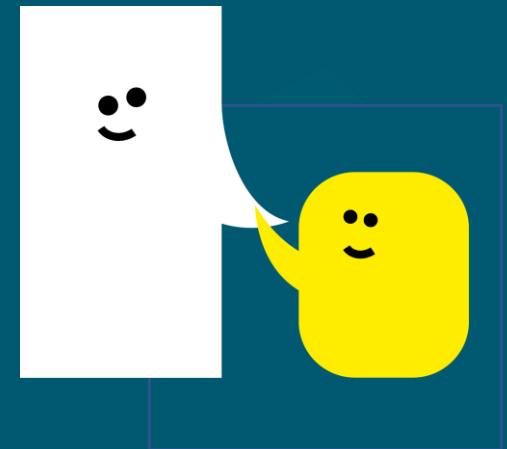


Class Teacher Primary Special School

Recruitment Pack for Candidates
December 2024



A Speech and
Language UK school



About Meath



A Speech and
Language UK school

Meath, a Speech and Language UK School (www.meathschool.org.uk) based in Ottershaw, Surrey is a day and residential non-maintained primary special school for up to 75 pupils aged 4 to 11 years, where Speech and/or Language Disorder and associated difficulties is the primary need, including children with high functioning Autism.

Our most recent Ofsted report (2023) is highly positive about the work of the school and the progress which our children make. "Pupils are happy and safe, and they enjoy being in school. They comment that 'everyone can have friends here'."

"The values of 'talk, learn, grow' are at the heart of all that the school does. Every aspect of learning is centred around equipping pupils to become confident and independent communicators."

"The harmonious collaboration between the therapy and education teams forms the core provision. Therapy programmes are seamlessly intertwined throughout all lessons, and every pupil benefits from this enrichment."



A Speech and
Language UK school

About Speech and Language UK

**Speech and
Language UK** 
Changing young lives.

At **Speech and Language UK**, we want every child to face the future with confidence. For 1.9 million children in the UK, learning to talk and understand words feel like an impossible hurdle. Without the right help, this can destroy their world. They feel disconnected from their family. Unable to make friends. Unfairly punished for not following instructions they don't understand. What does the future hold for them?

We must reach children earlier, to make sure every child has the skills to face the future. We design innovative tools and training for thousands of nursery staff and teachers. We give families the confidence and skills to help their child. And we put pressure on politicians to prioritise support for children. Too many children are left waiting to be understood. Help us bring speech and language skills into the spotlight so they can all flourish.

For more information about Speech and Language UK, its work and values go to or follow-us on Twitter @SpeechAndLangUK



Principal's Welcome

It is with great pleasure that I welcome you to share the experience we have at Meath. We are a school dedicated to ensuring every child learns to communicate, gets a positive learning experience and feels a sense of belonging and security to be themselves and flourish by overcoming their barrier to learning. Our school is emersed in the total communication approach, so whatever the communication need, there is a way to get past it.

We at Meath, take great pride in the work we do and the progress we see of individual children. We believe that we open doors and support children to be strong independent communicators and learners. We offer a way to ensure they are heard and can give their valued voice and opinion by whatever means.

We want to prepare children for the next stage of their education and give them the tools to independently access the learning and education which will provide them with greater life choices and experiences. We want every child to **TALK, LEARN,** and **GROW,** we want them to 'talk' through any means possible, learn and empower them to grow as independent citizens. Our collaborative and immersive environment allows children to be effective communicators and learn various means to have their voice heard. We work as a multi-disciplinary team to ensure the best expertise is shared and taught so that we drive progress forward and ensure we are providing the most evidence-based approach to our practice.

Majella Delaney
Principal

“Meath School has been amazing – we’ve got our little boy back! He’s made lots of friends, and he’s understanding so much more.”



The Role

Thank you for your interest in becoming our Lunchtime Play Supervisor at our Ofsted 'Outstanding' school in Surrey. We have been rated as outstanding for fourteen years and are part of the leading children's communications charity, Speech and Language UK. We are located between Woking and Chertsey in delightful grounds close to Runnymede which is an inspiring setting to work in.

We are looking to appoint Class Teacher who will be responsible for delivering high-quality, inclusive education tailored to children with special educational needs.

Key duties include planning and teaching lessons, monitoring student progress, collaborating with multidisciplinary teams, and fostering a safe and engaging learning environment. The role also involves contributing to school-wide initiatives, professional development, and maintaining high standards of safeguarding and professional conduct.



What we offer

Meath, a Speech and Language UK School is a fantastic place to work, with benefits including;

- Annual salary reviews
- Employee assistance programme providing a confidential helpline
- Supportive and paid sick leave, if needed
- 1 wellbeing day to be taken during term time each year
- A team of Mental Health First Aiders in school
- A supportive culture that aims to promote positive mental health and wellbeing of staff
- Life events celebrated
- Staff appreciation gestures throughout the year
- A friendly, passionate and enthusiastic team dedicated to getting the best outcomes for our young people
- Free optional flu jab in the Winter
- Contributory pension scheme
- Life assurance cover
- Enhanced maternity and paternity leave
- Free eye test
- Interest-free annual season ticket loan and bike loan
- Plenty of onsite parking
- Discounted staff lunches
- Access to hundreds of exclusive perks, discounts and wellness resources through Perkbox
- A comprehensive induction programme so you can hit the ground running
- Continued professional development and training opportunities, and regular professional support





Job Description

Job Title: Class Teacher – Primary Special School

Salary: Teachers Main Pay Scale or Upper Pay Scale depending on experience, plus SEN allowance

Hours: Full time, term time

Contract Type: Permanent



A Speech and Language UK school



Job title: Class teacher – primary special school

Salary: Teachers Main Pay Scale or Upper Pay Scale depending on experience, plus SEN allowance

Hours: Full - time

Contract type: Permanent

Reporting to: Deputy Headteacher and Headteacher.

Main purpose

The teacher will:

- Fulfil the professional responsibilities of a teacher, as set out in the School Teachers' Pay and Conditions Document.
- Meet the expectations set out in the Teachers' Standards.

Duties and responsibilities

Teaching

- Plan and teach well-structured lessons to assigned classes, following the school's plans, curriculum and schemes of work
- Assess, monitor, record and report on the learning needs, progress and achievements of assigned pupils, making accurate and productive use of assessment.
- Adapt teaching to respond to the strengths and needs of pupils and taking on the support of the therapies available to the class as outlined on children's EHCP's.
- Set high expectations which inspire, motivate and challenge pupils and enable them to reach their full potential.
- Promote good progress and outcomes by pupils.
- Demonstrate good subject and curriculum knowledge.
- Participate in arrangements for preparing pupils for transition putting strategies and interventions in place to support the day-to-day education on the children assigned to you.
- To support where necessary with curriculum development as assigned by line manager.
- To fulfil and requirements for supervision and lunch and play time duties as set by duties manager.
- Learn, use and remain proficient at Sign Supported English (in – house training provided).
- To organise the classroom, its resources and displays that provide a stimulating and effective interactive learning environment.
- To attend meetings, training and inset as necessary in order to fulfill the training needs to support the development of the school.

Whole-school organisation, strategy and development

- Contribute to the development, implementation and evaluation of the school's & stakeholder's (Speech and Language UK) policies, practices and procedures, to support the school's values and vision.
- Make a positive contribution to the wider life and ethos of the school.
- Work with others (SLT, OT, EP parents and stakeholders) on curriculum and pupil development to secure co-ordinated outcomes.
- Provide cover, in the unforeseen circumstance that another teacher is unable to teach

Health, safety and discipline

- Promote the safety and wellbeing of pupils.
- Maintain good order and discipline among pupils, managing behaviour effectively to ensure a good and safe learning environment.
- Refrain from acting in a manner that in any way endangers yourself, fellow employees, or the public.
- Ensure that all policies and procedures relating to the protection of children in Speech and Language UK's services are always followed.
- Avoid any behaviour that discriminates against your fellow employees, or potential employees on the grounds of their sex, sexual orientation, marital status, race, religion, creed, colour, nationality, ethnic origin or disability.
- Safeguard at all times confidentiality of information relating to children, staff and Speech and Language UK's work.
- Behave in a manner that ensures the security of Speech and Language UK's property and resources.
- Abide by all relevant Speech and Language UK's Policies and Procedures.

Professional development

- Take part in the school's appraisal procedures
- Take part in further training and development in order to improve own teaching and develop strategies specific to Meath school.
- Where appropriate, take part in the appraisal and professional development of others.

Communication

- Communicate effectively with pupils, parents and carers, school management and leadership as well as external professionals who work with the children at Meath, providing reports and support where necessary.

Working with colleagues and other relevant professionals

- Collaborate and work with colleagues and other relevant professionals within and beyond the school.
- Develop effective professional relationships with colleagues.

Personal and professional conduct

- Uphold public trust in the profession and maintain high standards of ethics and behaviour, within and outside school.

- Have proper and professional regard for the ethos, policies and practices of the school, and maintain high standards of attendance and punctuality.
- Understand and act within the statutory frameworks setting out their professional duties and responsibilities

Management of staff and resources

- Direct and supervise support staff assigned to them.
- Contribute to the professional development of other teachers and support staff.
- Deploy resources delegated to them effectively.

Other areas of responsibility

- The teacher will be required to safeguard and promote the welfare of children and young people and follow school policies and the staff code of conduct.

Please note that this is illustrative of the general nature and level of responsibility of the role. It is not a comprehensive list of all tasks that the teacher will carry out. The postholder may be required to do other duties appropriate to the level of the role, as directed by the headteacher or line manager.

This job description is subject to regular review and appropriate modification.

Person specification

Criteria	Qualities essential	Qualities desirable
Qualifications and experience	Qualified teacher status. Degree in relevant field. Successful primary teaching experience of children with special education needs.	Experience in a special educational needs setting.
Skills and knowledge	Knowledge of the National Curriculum Knowledge of effective teaching and learning strategies A good understanding of how children learn Ability to adapt teaching to meet pupils' needs Ability to build effective working relationships with pupils and staff. Knowledge of guidance and requirements around safeguarding children Knowledge of effective behaviour management strategies Good ICT skills, particularly using ICT to support learning	Knowledge and experience of working with P scales. Knowledge of effective teaching and learning strategies particularly for children with SEND. Knowledge of language development and disorders related to language development.
Personal qualities	A commitment to getting the best outcomes for all pupils and promoting the ethos and values of the school A commitment to self-professional development and that of others working in the environment. High expectations for children's attainment and progress Ability to work under pressure and prioritise effectively Ability to work effectively with a multi-disciplinary team. Commitment to always maintaining confidentiality Commitment to safeguarding and equality. Punctual and reliable. Flexible and dedicated.	Full license driver

How to Apply

For an informal discussion please contact Majella Delaney, Deputy Headteacher on 01932 872302 or email majella.delaney@meathschool.org.uk

To apply please send a completed application form to sbm@meathschool.org.uk
Interviews will be held at Meath School.

Closing date: 9am on Monday, 20th January 2025 with interviews taking place over the following two weeks

Speech and Language UK is committed to safeguarding and promoting the welfare of children. We carry out appropriate vetting and verifications on all staff.

In line with Keeping Children Safe in Education the successful candidate's employment is subject to an enhanced DBS and barred list check.

Please find details of our [safeguarding policy](#)

All shortlisted candidates will be subject to an online search covering content that is in the public domain.

Accessibility Support: We are committed to ensuring that our recruitment process is accessible to everyone. If you require any adjustments or need to apply in a different format, please contact our People Team at hr@speechandlanguage.org.uk and we will be happy to assist you.

We are a Disability Confident Committed employer.

Thank you for your interest and we look forward to hearing from you!



meathschool.org.uk

Speechandlanguage.org.uk

Follow us @SpeechAndLangUK



A Speech and
Language UK school

