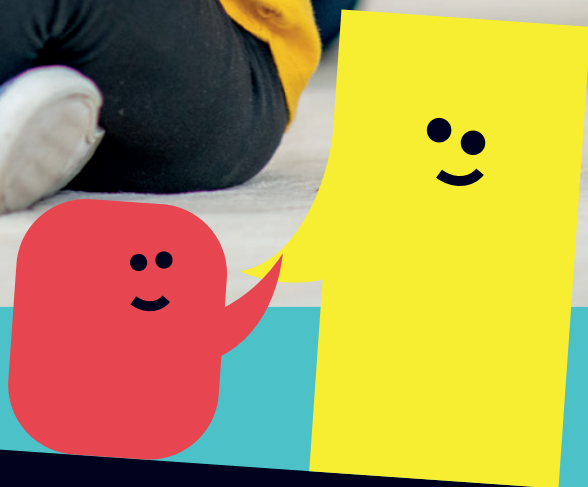


# Change young lives with a gift in your will





# Give the gift of communication skills, with a gift in your will

Thank you for showing how much you care about the 1.9 million children across the UK who struggle with talking and understanding words.

Without the right support, there's a real risk these children will fail key school subjects and go on to lead a challenging life – often encountering the criminal justice system and suffering from mental health problems along the way.

As you will read in this booklet, with a gift in your will you'll be helping children overcome their challenges with talking and understanding words.

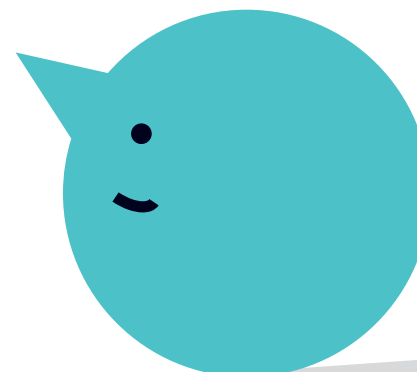
Last year we reached 80,234 children, largely due to more schools and nurseries using our evidence-based programmes. We know that families find our resources life-changing, and we now have over 30,000 people viewing our family information online.

A gift in your will, together with the crucial skills and resources of Speech and Language UK, will help children flourish and allow them to face the future with confidence.

Thank you so much in advance – your kindness and generosity really will make a huge difference to countless young lives across the UK.

With best wishes,

**Jane Harris**  
Chief Executive



# Facing the future with confidence

For at least 1.9 million children in the UK, learning to talk and understand words feels like an impossible hurdle. This affects every aspect of their and their families' lives. They are vastly more likely to fail at school, more likely to be lonely and have mental health problems, more likely to end up in the criminal justice system and more likely to be out of work as an adult.

**We work to give every child the skills they need to face the future with confidence.**

- We give families the confidence and skills to help their children.
- We design innovative tools and training for thousands of nursery assistants and teachers.
- We put pressure on politicians to prioritise help for speech and language challenges.
- Our two special schools, Meath in Surrey and Dawn House in Nottinghamshire, provide education to children with the most complex speech and language challenges and test out new practices for other schools to learn from.

## Advice for families

Many families struggle to know how to support their children with speech and language challenges. They feel lost and desperate, particularly when waits for specialist services are at an all-time high.

Our free progress checker tool helps families to check how their child is getting on with their talking and understanding of words and provides helpful advice and resources for families to help their child.

We provide life-changing advice and support to families through our advice line which offers tailored advice from speech and language advisors.

We rely on generous gifts in wills from supporters like you to keep our advice line running.

## Tools for schools and nurseries

We design innovative tools and training for thousands of teachers and nursery staff, helping them to change their everyday practice in classrooms and nurseries up and down the country.

Gifts in wills allow us to develop more programmes and promote these to more schools and nurseries.

## Campaigning for change

Gifts in wills help us push the Government to fund support for every child who needs it. We demand children get specialist speech and language therapy when they need it without waiting for years. We use our expertise to influence change and are dedicated to informing politicians and other decision-makers about the difficulties faced by children we support.

**“I used all the activities sent to me and given to me via the phone call. It’s been a number of months since and my son has shown so much progress.”**

**Parent who used our free advice line**

**“The students are becoming more confident working independently to solve problems. Most can remember the strategies we have learnt about for working out the meaning of words.”**

**Secondary school teacher**

# Our schools

With a gift in your will, you can help give children the education they need to overcome their speech and language challenges.

Our special schools, Meath in Surrey and Dawn House in Nottinghamshire, collectively serve almost 200 pupils through our distinctive model of making speech, language and communication skills the core of every lesson. Our schools explicitly teach these skills to children rather than expecting them to pick them up.

Gifts in wills help our schools give pupils access to a range of specialised modern facilities, including for the creative industries of photography, media, enterprise, and drama so that they can take part in activities and experiences beyond the core curriculum, which often build their self-esteem and confidence. Recently a gift in a will funded a sensory bus at our Dawn House school.

Both schools provide residential facilities, allowing children to learn about living more independently from home and to form strong relationships and friendships.

**“Sean’s speech and development are delayed... at a mainstream school he was isolated quite a lot and not really getting the attention he needed. But things are so much better now he’s at Dawn House. He stays there a few nights a week and really loves it. He gets to mix with his peers and just hang out, which he never really got to do before. The residential care is really helping to build up his independence and confidence.”**

***Sean’s mum, Sarah***

**“Meath school has been amazing – we’ve got our little boy back! He’s made lots of friends, and he’s understanding so much more.”**

***Parent of child at Meath school***





# Make your will for free – introducing our partner

octopus  
legacy

Writing a will can seem daunting, but it doesn't need to be. We have partnered with Octopus Legacy to help our supporters easily write or update a simple will for **free**.

You can do it online, over the phone or even in-person – whichever way suits you best.

You don't have to leave a gift to Speech and Language UK to use this service, but we hope you'll consider it. Gifts in wills are vital to the work we do to support children with speech and language challenges.

Why do this today:

- **It's quick and easy** – the average Octopus Legacy will take 15-20 minutes.
- **It's safe** – Octopus Legacy wills are legally binding and checked by experts.
- **It's free** – the usual cost for a simple will with Octopus Legacy is £90.
- **You will have peace of mind** that your affairs are in order.

## Any gift you leave will make a difference

It's tempting to put off making a will for another day. But once it's done you can be sure that you have taken care of your family, friends and the causes most important to you. Your will is an important reflection of who you are and your values.

When you leave a gift to Speech and Language UK, the amount you leave doesn't matter. It's knowing that we have your support in years to come. Even a 1% share of your estate can help to give much needed support to children and their families.

## A residuary gift

This is the remainder, or a percentage of the remainder of your estate, once other payments have been made, and is the choice of many of our supporters.

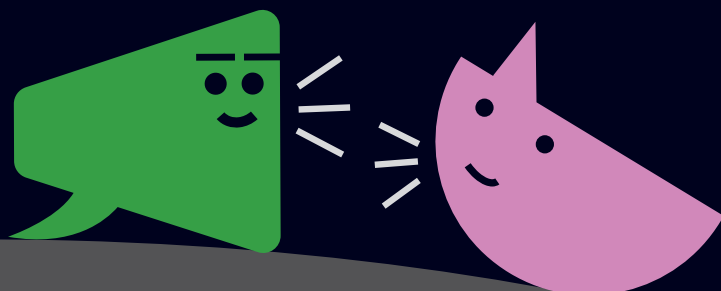
We suggest this wording:

'I give \_\_\_\_ % of my residuary estate to Speech and Language UK, Unit A The Cube Building 17-21 Wenlock Road London N1 7GT Registered charity number 210031, to be applied for its general purposes and I declare that the receipt of the finance director or appropriate officer shall be a complete discharge to my trustees.'

**“Writing my will was something I considered daunting which is why I put it off for years. Writing my will online via Octopus Legacy was one of the least daunting online experiences I’ve ever had. It was not only simple, it was quick and very good value. I would recommend it to anyone reading this.”**

**Anne Groarke**

★ Trustpilot





◀ One of our two schools, Dawn House in Nottinghamshire, supports children with complex speech and language challenges.

### A pecuniary gift

Or you may decide to give a fixed sum of money – a pecuniary gift – using this wording:

'I give £\_\_\_ to Speech and Language UK, Unit A The Cube Building 17-21 Wenlock Road London N1 7GT Registered charity number 210031, to be applied for its general purposes and I declare that the receipt of the finance director or appropriate officer shall be a complete discharge to my trustees.'

No matter what you decide, you can help children who struggle to talk and understand words face the future with confidence, learn at school and feel part of the world with their families and friends for years to come. And all this will be because of you.

**If you have any questions about leaving a gift in your will to Speech and Language UK including our free wills service, email [legacy@speechandlanguage.org.uk](mailto:legacy@speechandlanguage.org.uk).**

### Other things to consider

#### Inheritance tax

If 10% or more of your estate is left to charity, the rate of inheritance tax paid on your estate will go down. Octopus Legacy can provide you with all the details. Any gift you leave to Speech and Language UK will be exempt from inheritance tax.

#### Funeral plans

When writing your will you may wish to specify your funeral plans, to help your loved ones make decisions more easily at a difficult time.

#### Reviewing your will

It's important to keep your will up to date, by making sure you take account of changes in your circumstances such as a family bereavement or birth of a grandchild. You would be very welcome to come back to Speech and Language UK in years to come to make or update your will using our free wills partner.

Unit A, The Cube Building  
17-21 Wenlock Road  
London N1 7GT

020 7843 2510  
[speechandlanguage.org.uk](http://speechandlanguage.org.uk)  
[info@speechandlanguage.org.uk](mailto:info@speechandlanguage.org.uk)

Speech and Language UK is the operating name of I CAN Charity, a registered charity in England and Wales (210031) and Scotland (SC039947), which is a company limited by guarantee registered in England and Wales (00099629). Registered address: 17-21 Wenlock Road, London, N1 7GT.

**Speech and  
Language UK**   
Changing young lives.

 Registered with  
**FUNDRAISING  
REGULATOR**