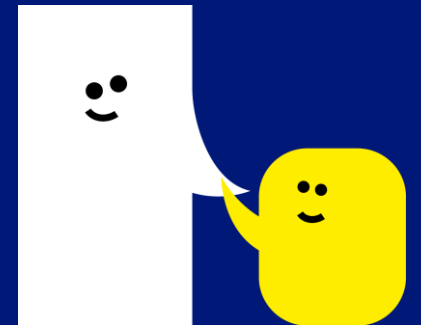


# Cleaner

Recruitment Pack  
March 2025



A Speech and  
Language UK school



## About Dawn House



A Speech and  
Language UK school

*"Dawn House has been amazing – we've got our little boy back! He's made lots of friends, and he's understanding so much more."*

Dawn House is set in a beautiful location with acres of well-maintained grounds. We pride ourselves as delivering outstanding, high quality integrated education, therapy, and care. You will work collaboratively as part of strong and supportive multi-disciplinary team of teachers, therapists, teaching assistants and residential care officers, with class groups, smaller groups and with individual children. To succeed we need people like you, who share our dedication and passion to contribute towards the successful futures of our young people.

Dawn House School is a non-maintained day and residential school for pupils aged between 5 – 19 years, who have severe and complex speech, language and communication challenges with associated learning and/or behavioural differences. The School retained its 'Outstanding' rating from Ofsted in June 2023. The 104 pupils at Dawn House, a Speech and Language UK School receive the integrated therapy, education and care that they need to learn and develop independence. They receive full access to the national curriculum (pre 16) and an enriched curriculum that supports the transition to adulthood (post 16).



A Speech and  
Language UK school

# About Speech and Language UK

**Speech and  
Language UK**   
Changing young lives.

At Speech and Language UK, we want every child to face the future with confidence. For 1.9 million children in the UK, learning to talk and understand words feel like an impossible hurdle. Without the right help, this can destroy their world. They feel disconnected from their family. Unable to make friends. Unfairly punished for not following instructions they don't understand. What does the future hold for them?

We must reach children earlier, to make sure every child has the skills to face the future. We design innovative tools and training for thousands of nursery staff and teachers. We give families the confidence and skills to help their child. And we put pressure on politicians to prioritise support for children. Too many children are left waiting to be understood. Help us bring speech and language skills into the spotlight so they can all flourish.

For more information about Speech and Language UK, our work and values go to our website <https://speechandlanguage.org.uk/> or follow-us @SpeechAndLangUK.

To find out more about Dawn House School and Speech & Language UK please visit [www.dawnhouseschool.org.uk](http://www.dawnhouseschool.org.uk) and [Speech and Language UK: Changing young lives](#)



# Principal's Welcome

Our vision is to be an outstanding school providing a collaborative, child centred and innovative experience that enables our children to achieve ambitious goals and have endless opportunities. Communication is a fundamental life skill and good communication is key to ensuring children get the best start in life. Supporting speech and language development is at the heart of everything we do at Dawn House School. We give a voice to those that do not always have the words.

We are committed to integrating outstanding education and in-house therapy for all pupils in a highly specialist environment where their speech, language and communication needs do not prevent them from learning. We work hard to ensure that children receive an appropriate curriculum, are happy and engaged, and partake in a range of experiences. All of which is made possible by our hardworking and dedicated staff who work in partnership with parents to meet our children's holistic needs.

Our 'entry to exit' curriculum ensures that throughout their school career, children are preparing for life beyond our school gates and are supported to develop strategies that help them to overcome the barriers to their learning. We ensure that each of our pupils emerge as self-confident, independent individuals, able to manage their own learning and behaviour and equipped with the competencies, skills and strategies to take the next steps into further or higher education and the world of work.

Our students are impressive young people and we are extremely proud of their achievements and of our school. We are always happy to welcome visitors and to share our good practice.

*Jenny McConnell*  
*Principal*



# What we offer

Dawn House, a Speech and Language UK School is a fantastic place to work, with benefits including;

- Salaries regularly benchmarked against market rates
- Employee assistance programme providing a confidential helpline
- Supportive and paid sick leave, if needed
- Free optional flu jab in the Winter
- Contributory pension scheme
- Life assurance cover
- Enhanced maternity and paternity leave
- Free eye test
- Interest-free annual season ticket loan and bike loan
- Access to hundreds of exclusive perks, discounts and wellness resources through Perkbox
- Use of the swimming pool
- A comprehensive induction programme and opportunities to shadow therapists and other staff to gain a good understanding of different roles in school
- Continued professional development and training opportunities, and regular professional support
- Staff tea and toast breakfast catch-ups
- Good attendance perks, long service and employee of the month awards
- A friendly, passionate and enthusiastic team dedicated to getting the best outcomes for our young people







## Job Description

- Job title:** Cleaner
- Grade:** £12.35 per hour, pay spine 1  
(pay review pending)  
Actual salary £12,533.85 (FTE £22,495)
- Responsible to:** School Business and Finance Manager
- Start Date:** April/May 2025
- Location:** Dawn House, Helmsley Road, Rainworth,  
Nottinghamshire, NG21 0DQ
- Hours:** 22.5 hours per week  
Working pattern 6am – 10.30am  
(Monday – Friday)  
Term time only.



A Speech and  
Language UK school



## Job Description

<b>JOB TITLE:</b>	Cleaner
<b>RESPONSIBLE TO:</b>	Cleaning Supervisor
<b>ACCOUNTABLE TO:</b>	School Business Manager

### Cleaner responsibilities

#### Job summary

Working within the cleaning team you would provide the best possible educational environment for pupils, staff and visitors. To ensure the cleanliness of the school is maintained to the highest standards possible. You will need experience of both general and deep cleaning within a school or professional environment.

#### Specific responsibilities

1. Ensure designated work areas are cleaned to the required standard and all work is checked and recorded
2. Keeping toilets and bathrooms in a clean hygienic condition, ensuring to replenish supplies and disposables.
3. Assist in cleaning other non-designated areas of school as time allows during the working day.
4. Keep work areas and cleaning store cupboards in an organised state.
5. Comply with current Health and Safety requirements as directed by your line manager e.g. recording work on the cleaning schedule.
6. To provide cover for colleagues as directed by the cleaning supervisor, you may be required to work in different areas or at different times depending on the needs of the school.



## General

1. To refrain from acting in a manner which in any way endangers you, fellow employees or the public.
2. To avoid any behaviour which discriminates against any member of the school community on the grounds of their age, sex, sexual orientation, marital status, race, religion, creed, colour, nationality, ethnic origin or disability.
3. Safeguard at all times confidentiality of information relating to children, staff, the School and Speech and Language UK's work.
4. Behave in a manner that ensures the security of Speech and Language UK property and resources.
5. Abide by all relevant Speech and Language UK and Dawn House Policies and Procedures.
6. Support the ethos and practices of the school.
7. Undertake any relevant training and development as required for the school needs.

This list of duties and responsibilities is by no means exhaustive, and the post holder may be required to undertake other relevant and appropriate modification.





## Cleaner Person Specification

CRITERIA	ESSENTIAL	DESIRABLE
Experience	<ul style="list-style-type: none"><li>▪ Previous cleaning experience</li></ul>	<ul style="list-style-type: none"><li>▪ Experience of working in an environment with children</li></ul>
Skills and Knowledge	<ul style="list-style-type: none"><li>▪ Awareness of Hygiene and Health and Safety requirements</li><li>▪ Good organizational skills</li><li>▪ Ability to prioritise tasks</li><li>▪ Ability to follow instructions</li><li>▪ The ability to work as part of a small team and on your own</li><li>▪ Awareness when using hazardous cleaning materials</li></ul>	
Other factors	<ul style="list-style-type: none"><li>▪ Self-motivated with a positive approach to your work</li><li>▪ High standards of hygiene and cleanliness</li><li>▪ Flexible approach</li><li>▪ Reliable</li></ul>	<ul style="list-style-type: none"><li>▪ The ability to understand the needs of the pupils in a special school and work around the requirements of the children and the professionals dealing with them</li></ul>

**Dawn House | A Speech and Language UK Services Ltd school | Principal: Jenny McConnell**

Helmsley Road, Rainworth, Nottinghamshire, NG21 0DQ | 01623 795361 | [www.dawnhouse.org.uk](http://www.dawnhouse.org.uk) | [enquiries@dawnhouse.org.uk](mailto:enquiries@dawnhouse.org.uk)  
Non-Maintained School | DfE No. 891/7022



## Speech and Language UK Summary of Terms and Conditions of Employment

<b>Job Title:</b>	<b>Cleaner</b>
<b>Start Date:</b>	April/May 2025
<b>Location:</b>	Dawn House School, Helmsley Road, Rainworth, NG21 0DQ
<b>Annual Salary:</b>	£12.35 per hour. Actual salary £12,533.85 (FTE £22,495) Pay review pending
<b>Hours:</b>	Working 22.5 hours per week Working 6am – 10.30am
<b>Working Weeks:</b>	39 weeks per year
<b>Annual Leave:</b>	6.07 weeks per holiday year during school closure periods
<b>Disclosure &amp; Barring Service Check:</b>	The successful candidate's employment is subject to an enhanced DBS and barred list check
<b>Probation:</b>	There is a six-month probationary period for this post
<b>Online search</b>	In line with KSCIE 2025, all shortlisted candidates will be subject to an online search covering content that is in the public domain
<b>Pension:</b>	Speech and Language UK group pension scheme with Aviva. Employer contribution 4.5%, minimum employee contribution 3%. This is offered as a salary exchange arrangement
<b>Perkbox:</b>	Employee benefit providing hundreds of exclusive perks for staff ranging from discounts on shopping, entertainment and gifts, to gym membership, rewards, confidential employee assistance and over 150 e-learning perks

**Dawn House | A Speech and Language UK Services Ltd school | Principal: Jenny McConnell**

Helmsley Road, Rainworth, Nottinghamshire, NG21 0DQ | 01623 795361 | [www.dawnhouse.org.uk](http://www.dawnhouse.org.uk) | [enquiries@dawnhouse.org.uk](mailto:enquiries@dawnhouse.org.uk)  
Non-Maintained School | DfE No. 891/7022

# How to Apply

The closing date for this vacancy is **9am on Friday 28<sup>th</sup> March 2025** with interviews taking place w/c 31<sup>st</sup> March 2025. Applications from previous applicants will not be considered at this time.

To apply please send the completed Application Form together with Supplementary Information Form to School Business Administrator [catherine.ingram@dawnhouse.org.uk](mailto:catherine.ingram@dawnhouse.org.uk)

Informal enquiries about this post can be made to Karen Lindley, School Business and Finance Manager on 01623 795361, [karen.Lindley@dawnhouse.org.uk](mailto:karen.Lindley@dawnhouse.org.uk)

Speech and Language UK is committed to safeguarding and promoting the welfare of children. We carry out appropriate vetting and verifications on all staff. Please find details of our safeguarding policy [Safeguarding - Dawn House School](#)

All shortlisted candidates will be subject to an online search covering content that is in the public domain.

In line with Keeping Children Safe in Education the successful candidate's employment is subject to an enhanced DBS and barred list check.

Thank you for your interest and we look forward to hearing from you.



[dawnhouse.org.uk](http://dawnhouse.org.uk)

[speechandlanguage.org.uk](http://speechandlanguage.org.uk)

Follow us @SpeechAndLangUK



A Speech and  
Language UK school

